

**Item Code:** **P10 AKB 00-4** – ProFiller 1100 Autoclave Base Kit  
**P10 AK cs\*** – ProFiller 1100 Autoclave Size-specific Parts

\*cs = Capsule Size 00, 0, 1, 2, 3, 4

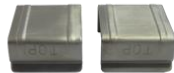
The Autoclave Kit replaces plastic parts with autoclave-safe parts to make the entire ProFiller 1100 autoclave safe at 121°C, 15 psi pressure for 30 minutes.

## PARTS IDENTIFICATION AND MATERIALS OF CONSTRUCTION

**Powder Tray**  
Hard Anodized Aluminum



**Powder Tray Clamps**  
Inox (SS304)



**Spacer Plate**  
Hard Anodized Aluminum with Inox (SS316) feet



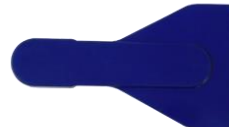
**Cam Spacer**  
Inox (SS316)  
For Optional Use  
Includes #7 wrench not shown in photo



**Capsule Locking Plate**  
Hard Anodized Aluminum with Inox (SS316) Handles



**Orientor Base**  
Hard Anodized Aluminum with 4 Feet in Inox (SS316)



**Powder Spreader**  
Silicone Rubber



**Capsule Locker**  
Hard Anodized Aluminum with Inox (SS316) Feet



**Spacer Plate Feet**  
Inox (SS316)

**COMMON FOR ALL SIZES 00-4**  
(P10 AKB 00-4)

**SIZE-SPECIFIC**  
(P10 AK cs)

## INSTALLING OR CHANGING SPACER PLATE FEET

Spacer Plate feet are size specific. To change, turn over Hard Anodized Aluminum Spacer Plate. Unscrew Spacer Plate Feet and replace with new size. Be sure to screw in flush with Spacer Plate for even filling.

## CHANGING TO INOX CAM SPACER (optional)

The nylon Cam Spacer ring (located just above the Cam Handle) shipped with your original system is autoclave safe at recommended conditions. As your option, you may change to the Inox Cam Spacer included with your Autoclave Kit. See reverse for replacement instructions.

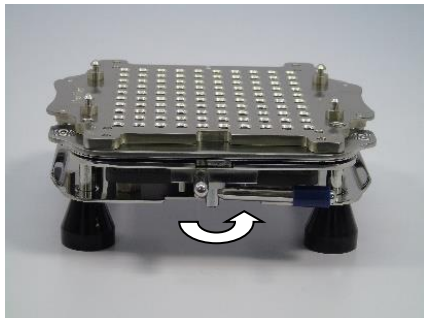
## CLEANING

- Hard anodized aluminum parts are dishwasher safe without automatic dishwasher detergent.
- Other parts are fully dishwasher safe with automatic dishwasher detergent.
- See your user manual Cleaning section for further cleaning instructions.

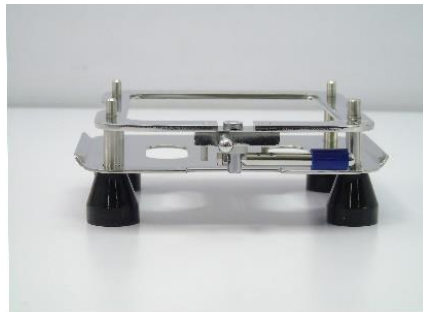


### REPLACING CAM SPACER (optional)

**Tools Required:** wrench #7 (included with Autoclave Kit)



1. Move Cam Handle all the way to the right.



2. Remove Caps Tray, Sheets a, b, c, and Spacer Plate.



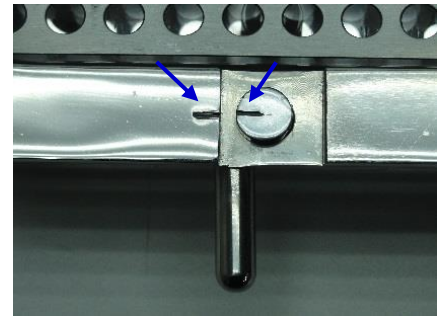
3. Remove 2 nuts from left end of Cam Handle using Wrench #7. Remove Cam Handle.



4. Slide off white nylon Cam Spacer ring and replace with Inox Cam Spacer.



5. Insert Cam Handle. Be sure line marking on top of Cam is still lined up with Base Frame as shown.



6. Place nuts onto Cam Handle.



7. Tighten using Wrench #7.



8. With Cam Handle all the way to the right, place Spacer Plate, Sheets a, b, c, Caps Tray onto Filler.

